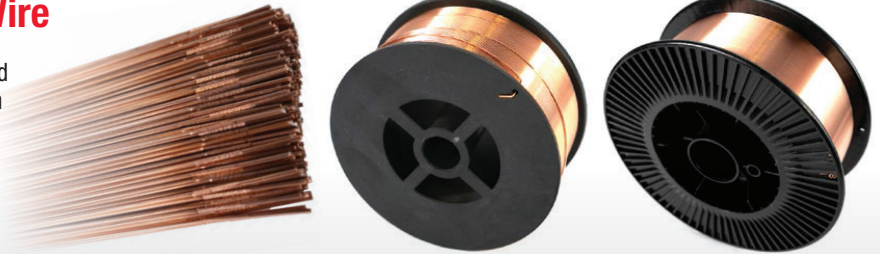


ER70S-6 Carbon Steel Welding Wire

- ER70S-6 is a copper coated carbon steel solid wire or rod that contains higher levels of manganese and silicon than the other standard grades of carbon steel wires.
- This wire features excellent tolerance of rust and scale.
- ER70S-6 is used for butt and fillet welding of sheet and plate of a variety of thickness.



E71T-1 Flux-Cored Carbon Steel Wire

- Weldcote Metals E71T-1 features lower spatter and fume emissions than conventional products in this class.
- E71T-1 is intended for single and multiple pass welding of carbon and certain low alloy steels in all positions, particularly in the overhead and vertical up positions.
- Weldcote Metals E71T-1 is used where a minimum tensile strength of 70,000 psi is required in the deposited weld metal.



308L/309L Stainless Steel

- Weldcote 308 stainless steel is used for TIG, MIG and submerged arc welding of un-stabilized stainless steels such as types 301, 302, 304, 305, 308.
- This filler metal is the most popular grade among stainless steels and used for general purpose applications where corrosion conditions are moderate.



4043 / 5356 Aluminum

- Weldcote 4043 (commonly referred to as AlSi5) is a 5% silicon aluminum filler metal that is available in Spools or cut lengths for MIG or TIG welding processes.
- 4043 aluminum filler metal is recommended for welding 3003, 3004, 5052, 6061, 6063 and casting alloys 43, 355, 356, and 214.
- The melting range is 1065-1170°F with a density of .097 lbs./cu.in.
- The average tensile strength is 27,000 psi,



WELDING HELMETS

ULTRAVIEW PLUS

Digital Auto Darkening Helmet
(High Definition Filter Optics)



ULTRAVIEWPLUSTC

#1 Seller

\$ 139

- **Optical Clarity Classification:** 1/1/1/1
- Delay Time (dark to light): 0.1s - 0.9s Adjustable
- LED Display: Yes. Shade Control: Internal
- Light State: Shade 3, Dark State: Shade 5-9 / 9-13
- Inside PC Lens: 106 x 89.5 x 1mm (4.17" x 3.52") - Weldcote
- Outside PC Lens: 114 x 133 x 1mm (4-1/2" x 5-1/4") - Standard
- Sensitivity/Delay: Adjustable
- Adjustable Arc Sensors: 4
- Grind Function: Yes
- Grinding Warning Flash: Yes
- Operation Temperature: (-10°C - 65°C) (14°F - 149°F)
- Storage Temperature: (-20°C - 85°C) (-4°F - 185°F)
- Hardhat Adapter Available: Part # HHADAPTER



Viewing Size:
100x83.4 mm / 3.94"x3.28"
(12.93 Sq. Inches)



Dark Shade #:
5-9 / 9-13



Warranty:
3 Years



UV/IR Protection:
Up to DIN15



Power Supply:
Solar and CR2450
Replaceable Battery



Switching Time
(light to dark):
0.08ms



Your Choice
\$ 159

ULTRAv-EMERALD



ULTRAv-EAGLE



ULTRAv-NEBULA

12.93 square inches
of viewing area!

KLEARVIEW

Analog Auto Darkening Helmet



KLEARVIEWTC

\$ 99

- **UPGRADE:** Optical Clarity Classification: 1/1/1/1
- Delay Time (dark to light): 0.1s - 0.9s Adjustable
- Light State: Shade 4, Dark State: Shade 5-9 / 9-13
- Inside PC Lens: 106 x 66 x 1mm (4.17" x 2.60")
- Outside PC Lens: 114 x 133 x 1mm (4-1/2" x 5-1/4")
- Low AMP TIG Adapted: Yes, > / = 3 AMP
- Sensitivity/Delay: Adjustable
- Arc Sensors: 4
- Grind Function: Yes
- Operation Temperature: (-10°C - 65°C) (14°F - 149°F)
- Storage Temperature: (-20°C - 85°C) (-4°F - 185°F)
- Hardhat adapter available: Part # HHADAPTER



Viewing Size:
100 x 60 mm
3.94" x 2.36"



Dark Shade #:
5-9 / 9-13



Weight:
550g (1.2 lbs)



UV/IR Protection:
Up to DIN15



Power Supply:
Solar and 2 CR2450
Replaceable Batteries



Switching Time
(light to dark):
0.08ms



KLEARvEMERALD

\$ 119

9.3 square inches
of viewing area!



**Free Helmet Storage Bag
with Purchase**

499 Running Pump Road, STE 105, Lancaster, PA
717-299-0121 Email: orders@rjwindustrial.com